

**Optional Accessories**

Clamps

- 180&90 Degree Peel Clamp (50kg).....
- Tape/Film/Paper Tensile Clamp (50kg).....
- Fabric/Leather Tensile & Tear Clamp (200kg).....
- Plastic/Rubber Tensile & Tear Clamp (200kg).....
- Yarn Tensile Clamp (50kg).....

Load cell

- 10kg load cell.....
- 50kg load cell.....

Calibration Certificate.....

Calibration Device.....

**Start-Up**

Start-up and training.....

Start-up, training and instrument calibration for the above equipments.....

- Start-up of the system by a qualified service technician
- Training session on the operation and maintenance of the system
- Calibration with certificate

**Shipment:**

FOB SHENZHEN or GUANGZHOU

**Delivery Terms:**

Shipment for the above equipments is X-X days after mutually agreed terms and conditions of your order

**Payment:**

50 % Advance and balance payment before delivery of goods

**Validity:**

This quote is firm for 30 days

**Warranty:**

One-year warranty on all parts, labor is not covered. Warranty coverage include shipment

**EQUIPMENT DETAILS**



Panasonic Servo Motor



G

## GENEERL SPECIFICATIONS

Estimated Packaging Dimensions: (W\*D\*H) 630\*630\*1400mm  
 Power supply source: single-phase, 220V±10%, 50/60Hz (can be appointed)  
 Estimated Gross Weight: 110kg  
 HS Code: 9024800000

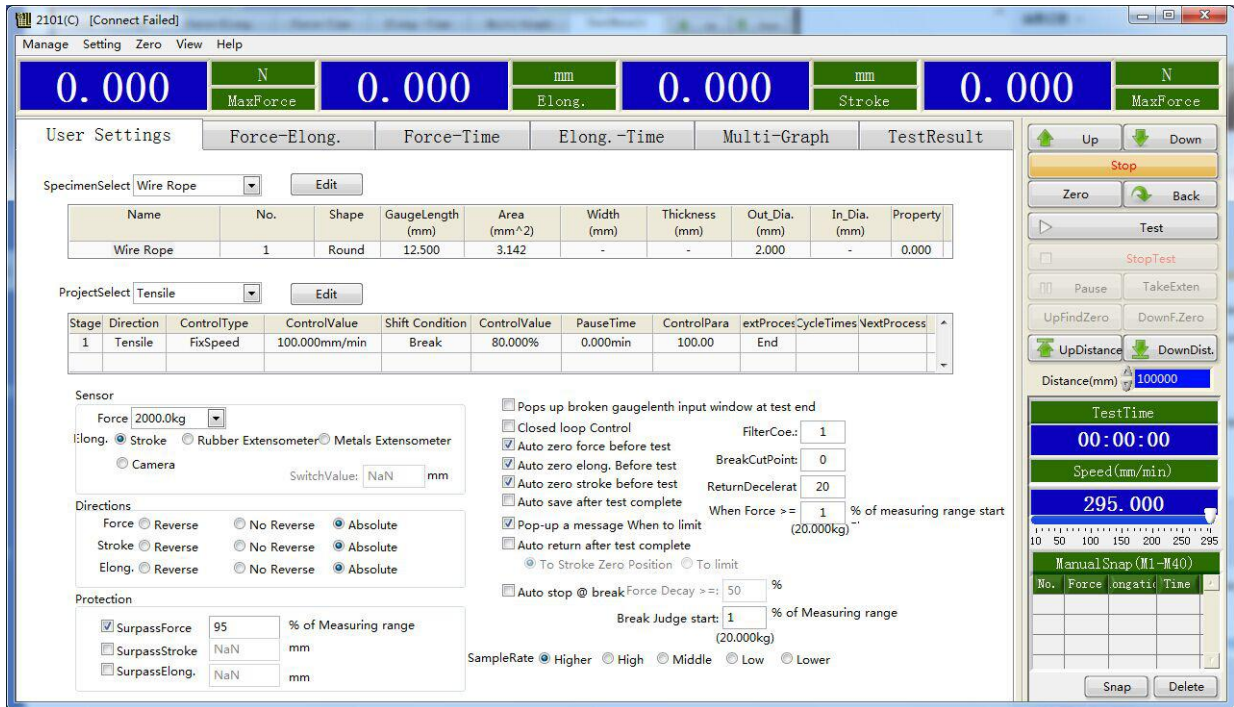
## STANDARD FEATURES

Item	Description
Max. Force	200 kg (2KN)
Load cell	Germany brand load cell for high accuracy
Control system	PC with windows 7 system
Motor	Panasonic servo motor w/ DC variable speed drive system, high-precision mechanical ball screw rod
Force reading	kgf, lbf, N, KN, T etc
Stoke	900mm including fixture
Load cell Resolution	1/250,000
Load Precision	≤0.5%
Test speed	0.1~500mm/min (adjustable by PC)
Software	TM 2101
Curves display	Load- elongation, Elongation-time, Time-elongation, Stress-strain
Data display	Max. force, speed, sample information, strength(Kpa, Mpa, N/mm, N/mm <sup>2</sup> ) etc...
Safety features	E-Stop Over-load protection Upper and lower limit switches Load sensor with automatic retreat

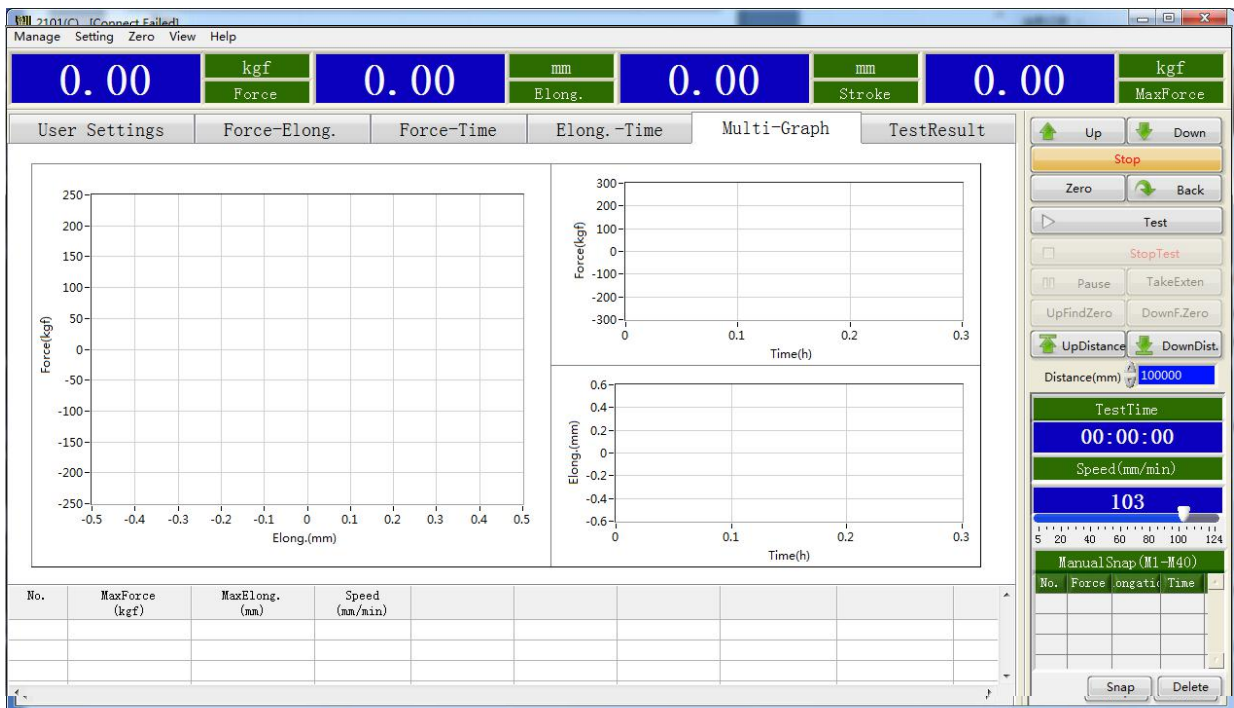
## APPLICATIONS

1. Deformation under defined load: Test deformation under defined load of tested sample
2. Load under defined deformation: Test load under defined deformation of tested sample
3. Software can issue report with results for max. force, elongation, tensile strength, peel strength, tear strength, compression strength, etc.
4. This machine can do different test as per customer requirement such as peel test, tear test, compression test, bend test with different clamps.

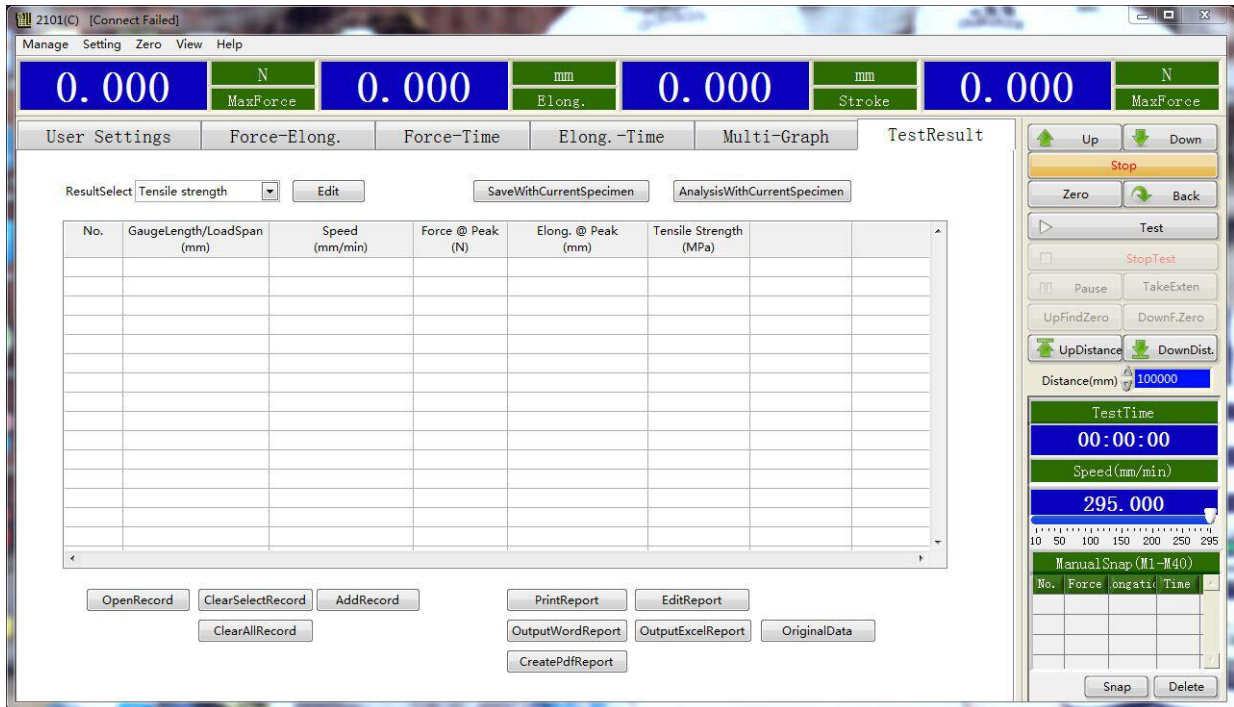
## SOFTWARE – TM 2101



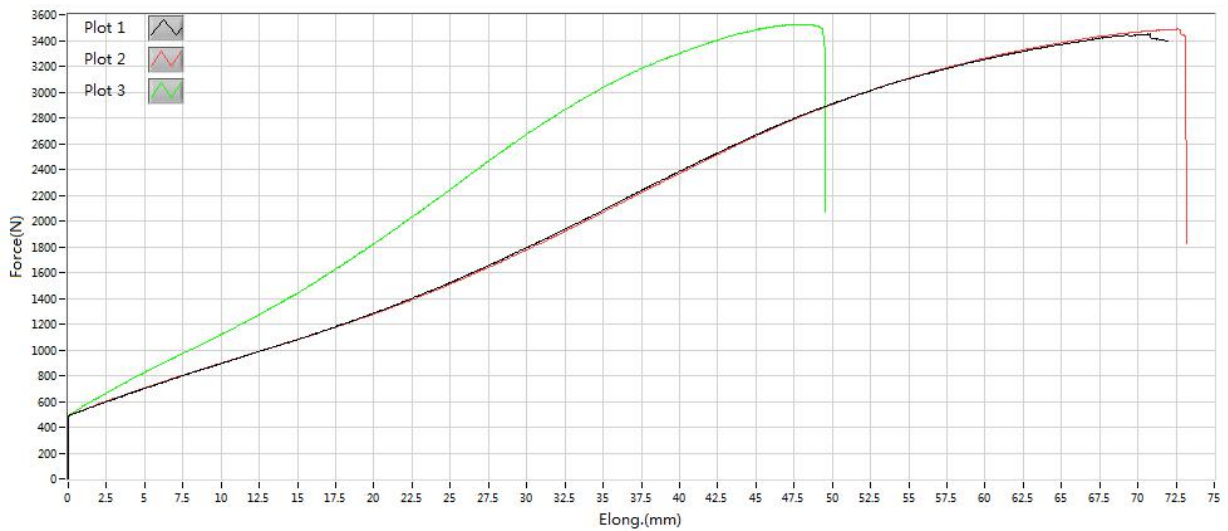
*User setting page*



*Curves display picture*



Test result picture



Test curve page

**How to Contact Us?**

---

**Address : 6th Floor, Rongda Building, Yuanwubian Road, Nancheng District,  
Dongguan, Guangdong, China (Mainland)**

**Factory Address : The 1st Industry area of Caibai, Daojiao Town, Dongguan City,  
Guangdong Province**

**Worktime :8:00-21:00(Beijing time)**

**Business Phone : 86-0769-38810298(Working time)**

**Fax : 86-0769-89280809 Contact Person : Mr. Liang**

**Job Title : director**

**Business Phone : 18576806187**

**Email : [sales04@qc-test.cn](mailto:sales04@qc-test.cn)**